

Customer :

customer

Customer part :

customer part

Comment :

Comment

S1=1.93

S2=2.3

Tmax=456

Tp S2=495.0

PI=0.46

HI=94

Sample =1675.60

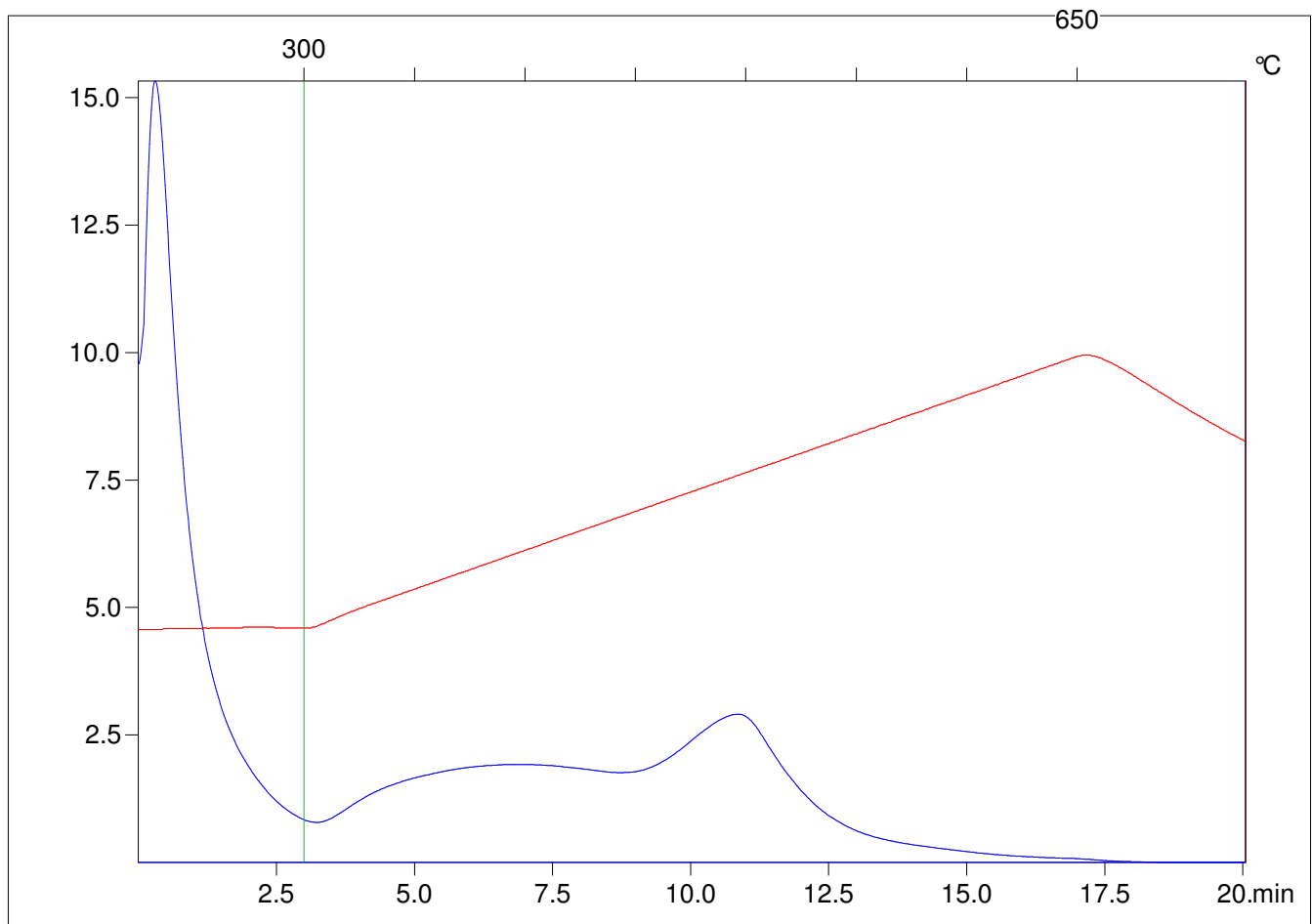
Method =Bulk Rock

Cycle=Basic

KFID(10\*9)=1444

Qty =70.1

TOC=2.44



C:\VINC\PK1\_1792\PK024.R00 : FID pyrolysis graphic

State Ok

Pyro Status Negative value

Oxi Status Negative value